



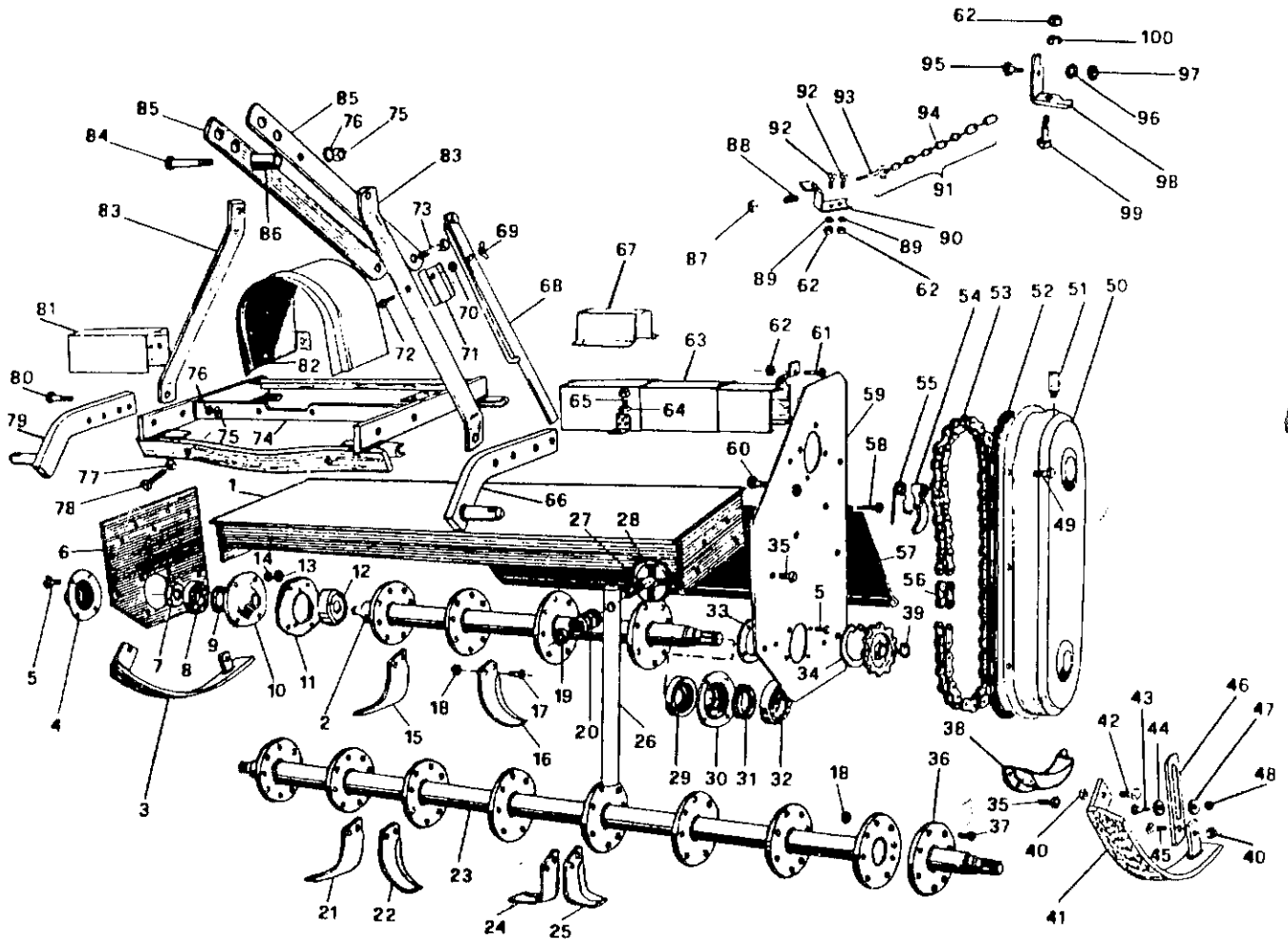
Rotary Tiller
Main Frame

11-2(34, 42, 50, 58,66)-231; 11-2(34, 42, 50, 58,66)-232

GR11

SR2

SR 2





Rotary Tiller
Main Frame
11-2(34, 42, 50, 58,66)-231; 11-2(34, 42, 50, 58,66)-232

GR11
SR2

ITEM	PART#	DESCRIPTION	QTY.
1	013 0501	MAIN FRAME 234	1
	023 0501	MAIN FRAME 242	1
	033 0501	MAIN FRAME 250	1
	043 0501	MAIN FRAME 258	1
	053 0501	MAIN FRAME 266	1
2	013 0081	ROTOR 234	1
	023 0081	ROTOR 242	1
	033 0081	ROTOR 250	1
	043 0081 X	ROTOR 258 X	1
3	013 0531	SKID RIGHT	1
4	003 0091	BEARING COVER RIGHT	1
5	000 1008	BOLT M10 X 30	8
6	003 0511	RIGHT SIDE PANEL	1
7	003 0095	SAFETY NUT M30	1
8	003 0094	BEARING 6306 -	1
9	003 4098	OIL SEAL 40.60.10	1
10	003 0092	BEARING COVER INNER	1
11	001 0073	EXT. COVER	1
12	002 2074	DIRT SHIELD RIGHT	1
13	000 1010	NUT M10	17
14	000 1011	LOCK WASHER M10	17
15	003 0104D	C KNIFE RIGHT NARROW	-
J 16	003 0104S	C KNIFE LEFT NARROW STANDARD	-
J 17	002 1104	BOLT M12 X 30	-
18	002 1105	NUT M12	-
19	003 0358	NUT SELF LOCK M14	1
20	000 1176	SPRING	1
X 21	000 1071D	C KNIFE RIGHT	-
X 22	000 1071S	C KNIFE LEFT	-
23	003 0421 053-0081	ROTOR 266 USE 053-0081	1
- 24	000 7288D	L KNIFE RIGHT	-
- 25	000 7288S	L KNIFE LEFT	-
26	003 0348	STAND	1
27	003 6153	BOLT M14 X 70	1
28	002 1004	STAND HITCH	1
29	- 003 0084	DIRT SHIELD LEFT	1
30	003 0121	FLANGE LOWER LEFT	1
31	000 3306	OIL SEAL 45.80.10	1
32	000 1148	BEARING 6308	1
33	003 0138	GASKET	1
34	000 8137	SNAP RING M90 INNER	1
35	000 1241	BOLT M10 X 25	13
36	003 0426	FLANGED PIVOT LEFT	1



Rotary Tiller
Main Frame

GR11
SR2

11-2(34, 42, 50, 58,66)-231; 11-2(34, 42, 50, 58,66)-232

ITEM	PART#	DESCRIPTION	QTY.
37	000 7087	BOLT M12 X 45	8
38	003 0667	CHAIN PAN PROTECTION	1
39	000 8138	SNAP RING M40 OUTER	1
40	003 0064	NUT M12 SELF LOCK	4
41	023 0531	SKID LEFT	1
42	001 5255	BOLT M12 X 30	2
43	003 0054	BOLT M12 X 50	2
44	003 0066	WASHER WITH THREAD	2
45	000 1043	BOLT M12 X 35	2
46	003 0051	SERRATED ADJUSTMENT ARM	2
47	003 0067	WASHER WITH HOLE M12	2
48	000 3038	NUT M12	2
49	000 1046	BOLT M10 X 20	10
50	003 0661	CHAIN CASE COVER	1
51	000 1107	BREATHER CAP	1
52	003 0666	GASKET	1
53	003 0146	CHAIN #100 ROLLER	1
54	003 0148	CHAIN TENSIONER	1
55	003 0158	CHAIN TENSIONER SPRING	1
56	003 0147	LINK A 100 MASTER	1
	000 1283	CHAIN LINK INNER	1
	000 1284	FALSE CHAIN LINK	1
57	013 0303	REAR SHIELD 234	1
	023 0303	REAR SHIELD 242	1
	033 0303	REAR SHIELD 250	1
	043 0303	REAR SHIELD 258	1
	053 0303	REAR SHIELD 266	1
58	003 0309	BOLT M16 X 70 FULL THREAD	2
59	003 0521	LEFT SIDE PANEL	1
60	003 0155	BOLT M10 X 60 FULL THREAD	1
61	000 1101	BOLT M10 X 45	1
62	000 1279	NUT M10	4
63	012 1253	PROTECTION 234-242	1
	022 1253	PROTECTION 250-258	1
	032 1253	PROTECTION 266	1
64	000 2034	WASHER M10	3
65	000 6349	BOLT M10 X 20	2
66	023 0411	LOWER HITCH PLATE LEFT -	1
67	002 2270	LEFT COVER	1
68	003 0844	RATCHET ARM & WRENCH	1
69	000 1807	WING NUT M8	1
70	000 1806	NUT M8	1
71	003 0339	LOCKING COVER	1



Rotary Tiller

GR1

Main Frame

SR2

11-2(34, 42, 50, 58,66)-231; 11-2(34, 42, 50, 58,66)-232

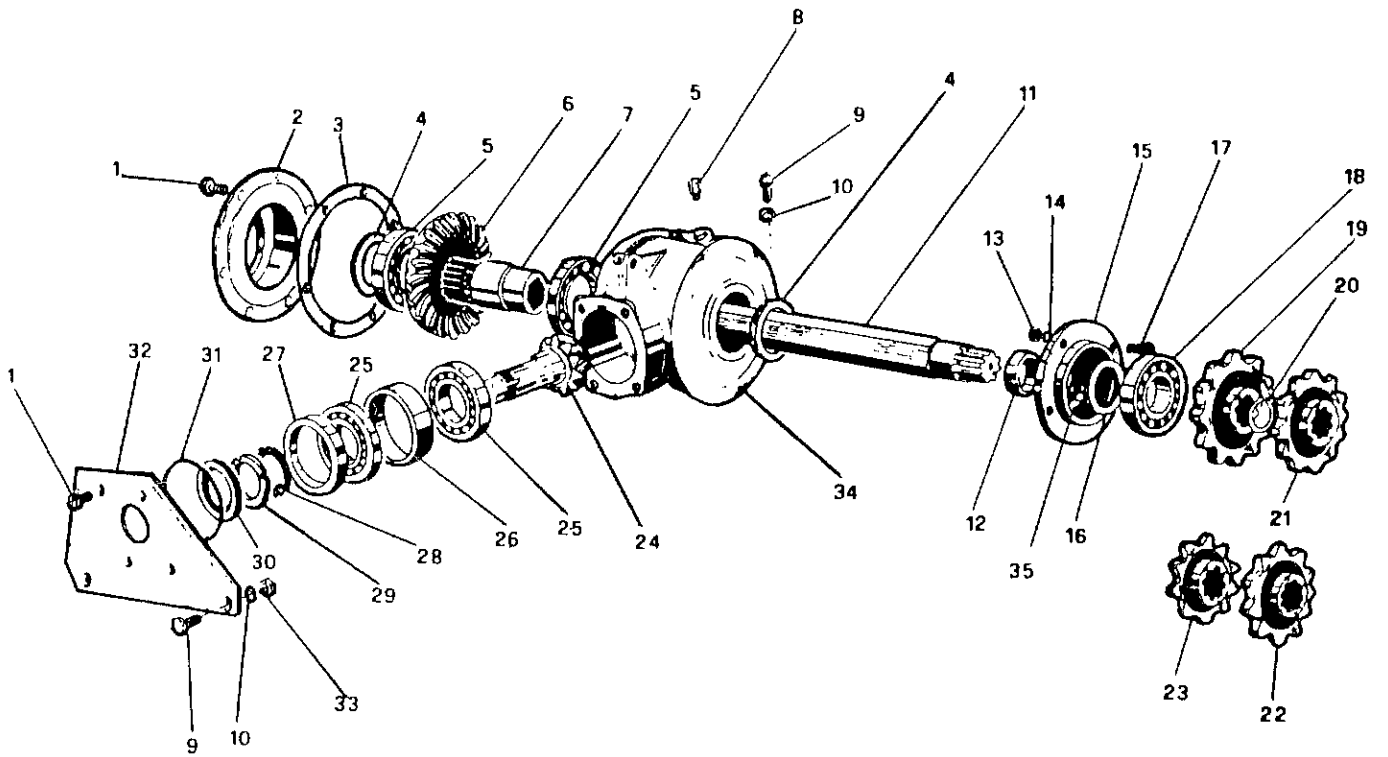
ITEM	PART#	DESCRIPTION	QTY.
72	000 8037	BOLT M8 X 50	1
73	003 0285	BOLT M14 X 100	1
74	003 0251	SIDE SHIFT COMPLETE	1
75	000 1019	NUT M14	6
76	000 1020	LOCK WASHER M14	6
77	000 1177	NUT M14	2
78	003 0261	BOLT M14 X 70	2
79	013 0411	LOWER HITCH PLATE RIGHT	1
80	003 2682	BOLT M14 X 55	2
	009 1128	BOLT M14 X 65	2
81	013 0260	RIGHT PROTECTION 234-242	1
	023 0260	RIGHT PROTECTION 250	1
	033 0260	RIGHT PROTECTION 258	1
	043 0260	RIGHT PROTECTION 266	1
82	003 4355	PROTECTIVE COVER	1
83	003 0293	TOP HITCH SUPPORT	2
84	009 0226	BOLT M14 X 110	1
85	003 0286	TOP HITCH ARM	2
86	000 1245	SPACER	1
87	001 3345	NUT SELF LOCK M12	1
88	002 1315	SPRING	1
89	000 1280	WASHER M10	2
90	002 1306	CHAIN HITCH UPPER	1
91	002 1301	CHAIN COMPLETE	1
92	003 3176	BOLT M10 X 25	2
93	002 1303	LIFTING HOOK	1
94	000 7257	CHAIN	1
95	000 1278	BOLT M10 X 30	1
96	003 0157	LOCK WASHER M10	1
97	001 4106	NUT SELF LOCK M10	1
98	003 0321	CHAIN HITCH LOWER	1
99	003 0334	BOLT M10 X 55	1
100	000 3038	NUT M12	1



TM

Rotary Tiller
Gear Box
11-2(34, 42, 50, 58,66)-231; 11-2(34, 42, 50, 58,66)-232

GR11
SR2





Rotary Tiller

GR11

Gear Box

SR2

11-2(34, 42, 50, 58,66)-231; 11-2(34, 42, 50, 58,66)-232

ITEM	PART#	DESCRIPTION	QTY.
1	000 1046	BOLT M10 X 20	10
2	003 0191	GEAR COVER	1
3	003 0193	GASKET	1
4	000 1084	OIL SEAL 55.72.10	2
5	003 0188	BEARING 6011	2
6	003 0196	BEVEL GEAR	1
7	003 0190	SHAFT COUPLING	1
8	000 1107	BREATHER CAP	1
9	000 2437	BOLT 14 X 40	3
10	000 1104	LOCK WASHER M14	3
11	013 0180	HEXAGONAL SHAFT 234	1
	023 0180	HEXAGONAL SHAFT 242	1
	033 0180	HEXAGONAL SHAFT 250	1
	043 0180	HEXAGONAL SHAFT 258	1
	053 0180	HEXAGONAL SHAFT 266	1
12	001 3044	SPACER	1
13	000 1010	NUT M10	4
14	000 1011	LOCK WASHER M10	4
15	003 0162	TOP SHAFT FLANGE	1
16	000 1155	OIL SEAL 50.80.10	1
17	000 1008	BOLT M10 X 30	3
	000 1101	BOLT M10 X 45	1
18	000 1148	BEARING 6308	1
19	003 0143	SPROCKET Z10 (STANDARD) —	1
20	000 8138	SNAP RING M40 EXT.	1
21	000 1112	SPROCKET Z11	1
22	000 1111	SPROCKET Z12	1
23	000 1113	SPROCKET Z13 (STANDARD) —	1
24	003 0197	PINION GEAR	1
25	003 0201	BEARING 30208	2
26	003 0203	SPACER REAR	1
27	003 0204	SPACER FRONT	1
28	000 7827	WASHER TOOTH LOCK M30	2
29	000 7826	NUT (M40)	1
30	003 0211	OIL SEAL 35.72.10	1
31	003 0213	OIL RING 805	1
32	003 0218	METAL COVER	1
33	000 1226	BOLT M14	2
34	003 0184	GEAR BOX	1
35	000 8137	SNAP RING M90 INT.	1
	050 0511	GEAR BOX COMPLETE	-

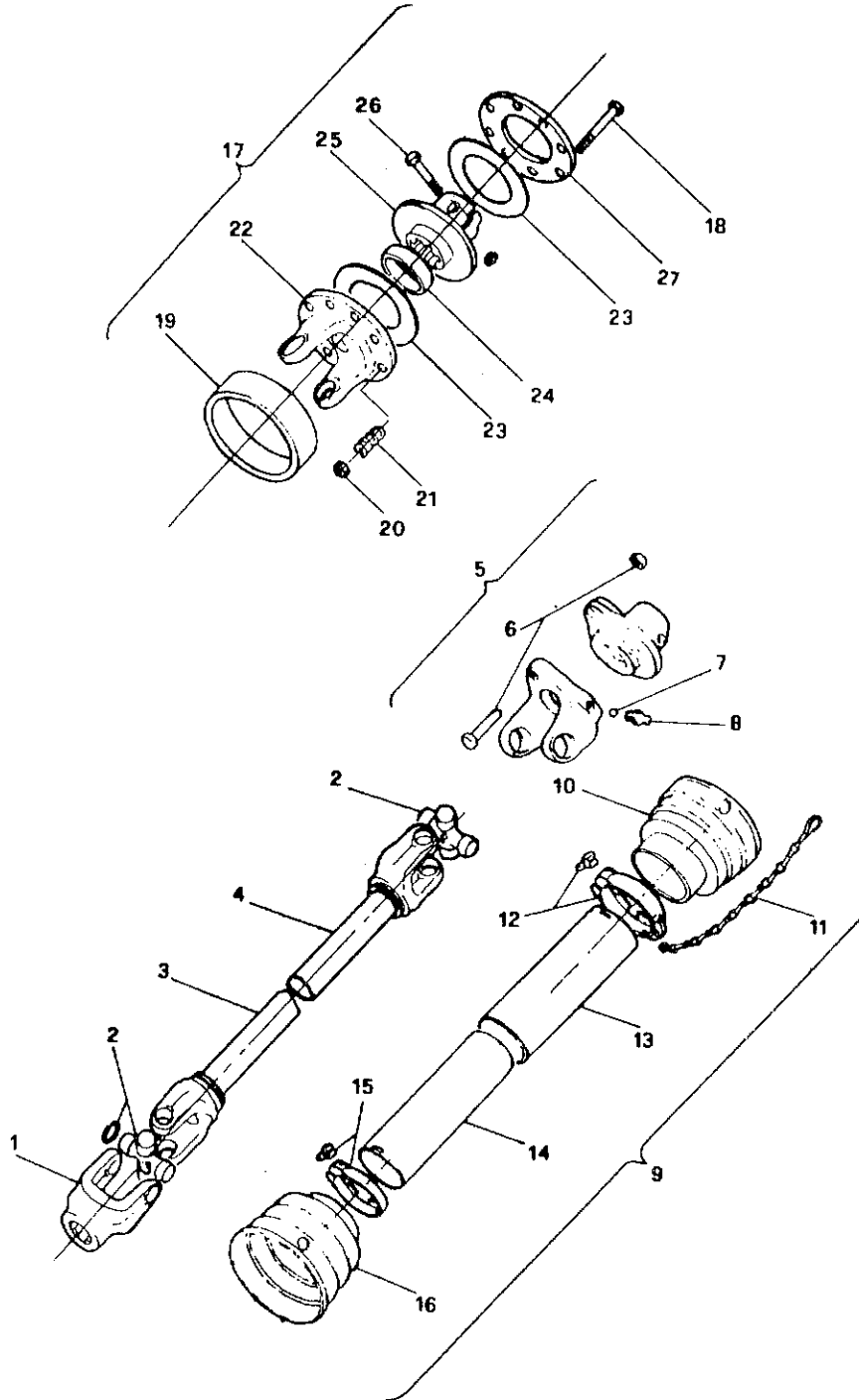


TM

Rotary Tiller
PTO

11-2(34, 42, 50, 58,66)-231; 11-2(34, 42, 50, 58,66)-232

GR11
SR2





Rotary Tiller

PTO

11-2(34, 42, 50, 58,66)-231; 11-2(34, 42, 50, 58,66)-232

GR11

SR2

ITEM	PART#	DESCRIPTION	QTY.
1	024 001E	YOKE TRACTOR END 1 3/8 - 6	1
2	014 130E	CROSS AND BEARING 27 X 74.6	2
3	140 109E	SHAFT ONLY - MALE	1
	014 007E	YOKE ONLY - MALE	1
	000 012E	ROLL PIN 8 X 55	1
4	140 209E	SHAFT ONLY - FEMALE	1
	014 006E	YOKE ONLY - FEMALE	1
	000 013E	ROLL PIN 8 X 60	1
5	240 001E	YOKE SHEAR PIN	1
6	000 505E	SHEAR BOLT WITH NUT 8 X 50	1
7	000 022E	BALL BEARING	18
8	000 020E	GREASE FITTING	1
9	* 240 209E	SHIELD COMPLETE	1
10	013 016E	GUARD CONE OUTER	1
11	016 025E	SAFETY CHAIN	2
12	013 012E	LOCKING COLLAR OUTER	1
13	141 109E	TUBE - FEMALE	1
14	141 209E	TUBE - MALE	1
15	013 011E	LOCKING COLLAR INNER	1
16	013 015E	GUARD CONE INNER	1
17	241 002E	SLIP CLUTCH YOKE COMPLETE	1
18	000 501E	BOLT M10 X 80	8
19	014 021E	DIRT SHIELD	1
20	001 5237	NUT SELF LOCK M10	8
21	014 022E	SPRING	8
22	014 017E	YOKE	1
23	014 019E	FRICITION DISK	2
24	015 020E	SPACER	1
25	014 018E	BODY FRICTION CLUTCH	1
26	000 502E	BOLT M12 X 65 WITH NUT	1
27	014 020E	OUTER FLANGE	1
	026 004E	PUSH PIN SET (PRESS IN RETAINER)	-
	026 009E	PUSH PIN SET ("C" CLIP RETAINER)	-
	948 301B	PTO COMPLETE T40 SHEAR PIN	-
	948 302B	PTO COMPLETE T40 SLIP CLUTCH	-

Shear bolt
Grade 5
000-505E

USE
240-285E